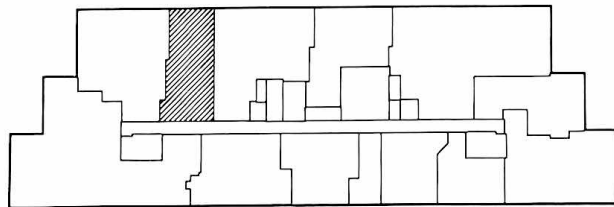
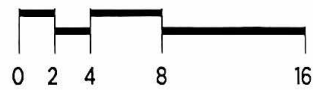


PROFESSIONAL BILLING MANAGEMENT - SUITE #350



RIDGEDALE OFFICE CENTER

13911 RIDGEDALE DRIVE

THIRD FLOOR

MINNETONKA, MN 55305

03/23/18

1,217 RSF

archimea
Interior Design Services, Inc.

3000 Fiero Drive, Suite 450, Bloomington, MN 55425 | 952.704.7006